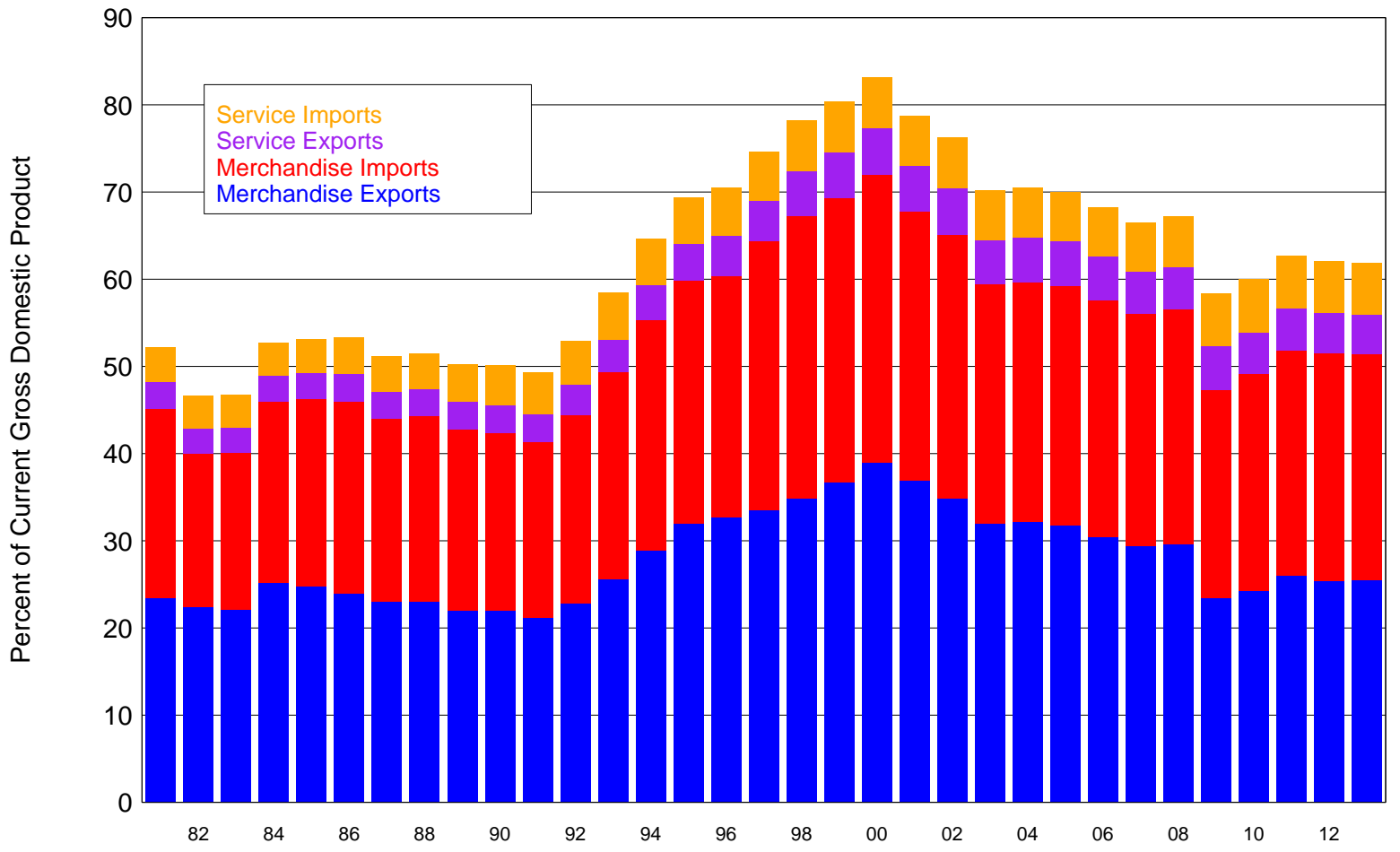
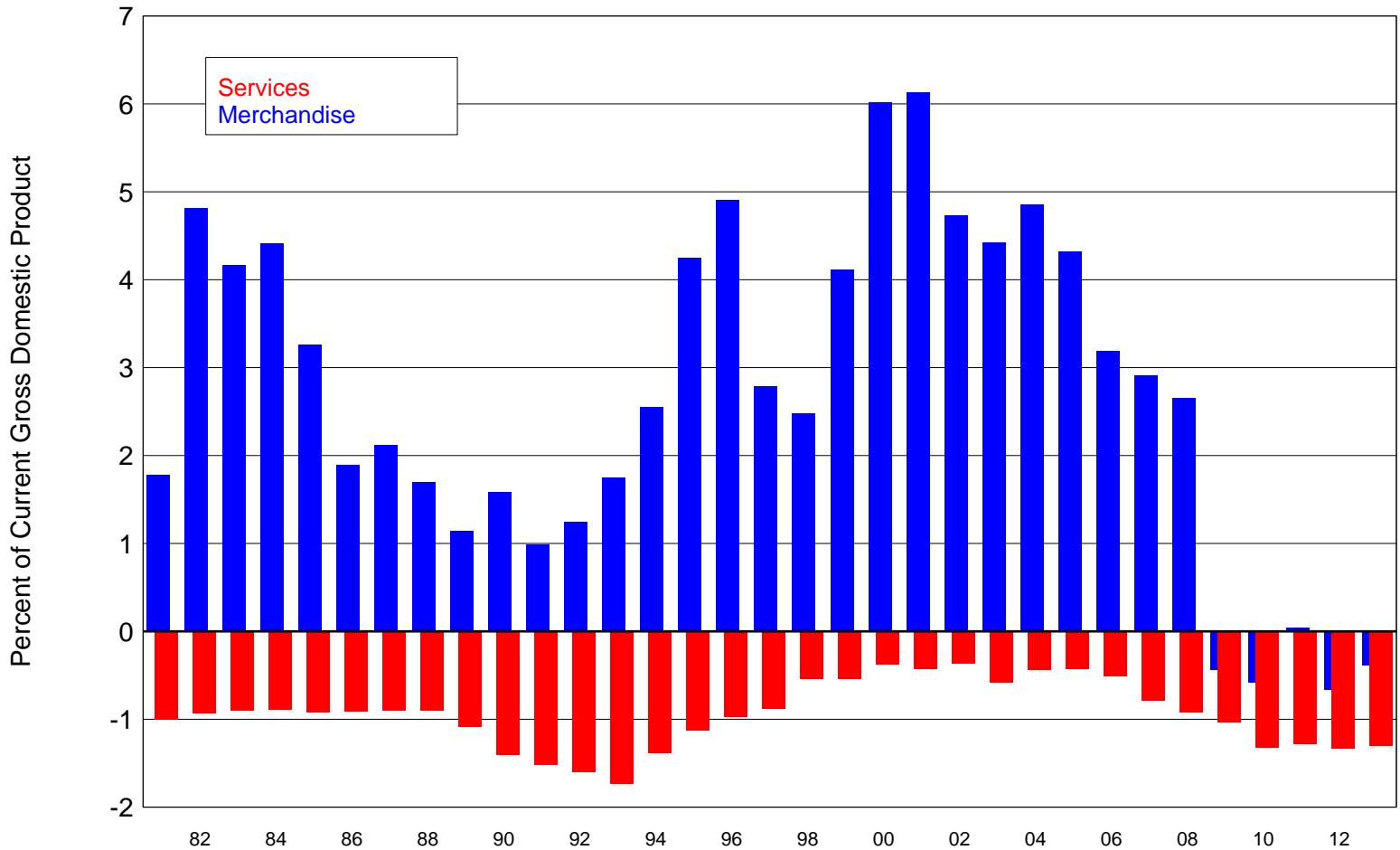


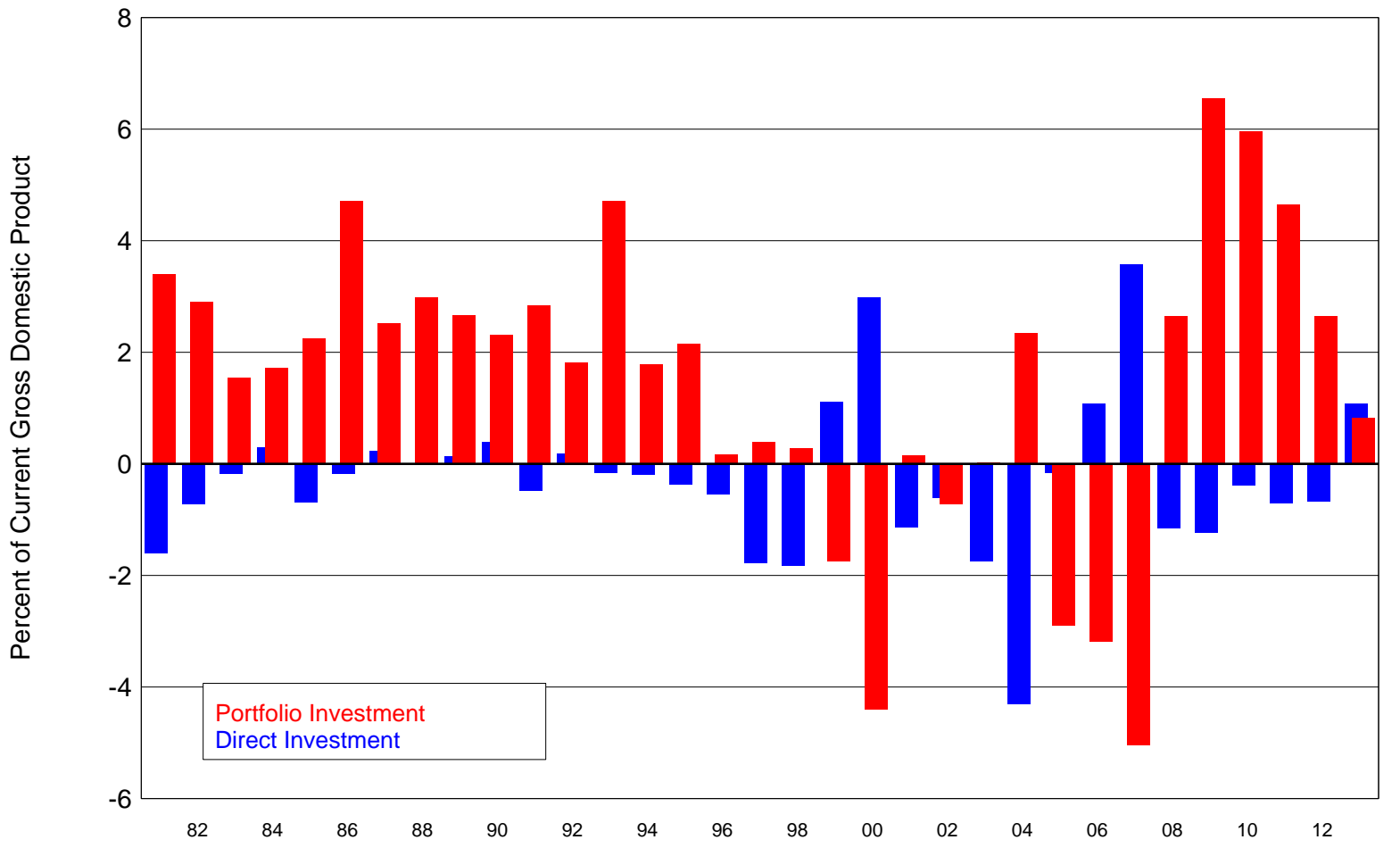
# Canadian Trade Intensity (Exports+Imports)



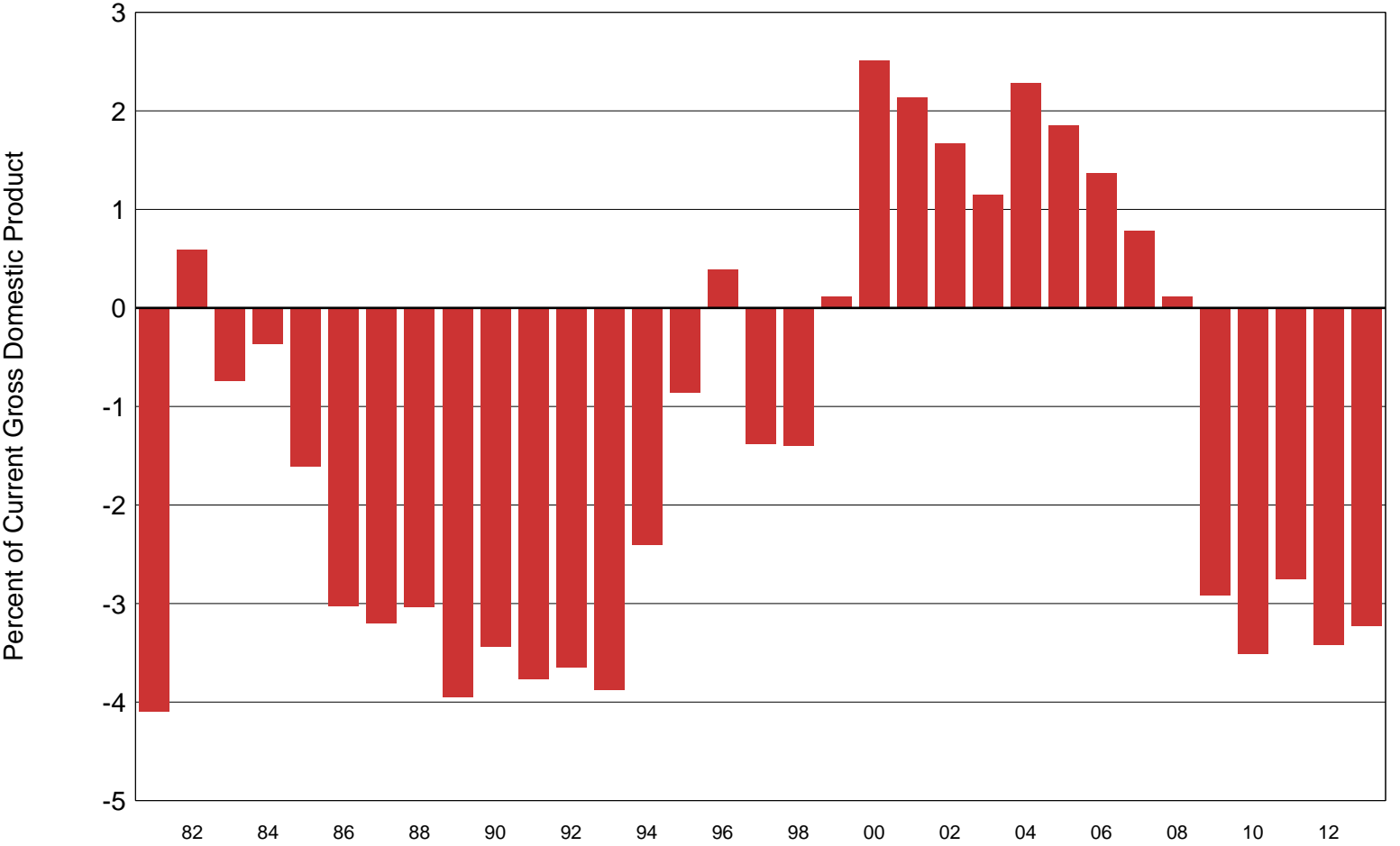
# Canadian Annual Balance of Trade (Exports-Imports)



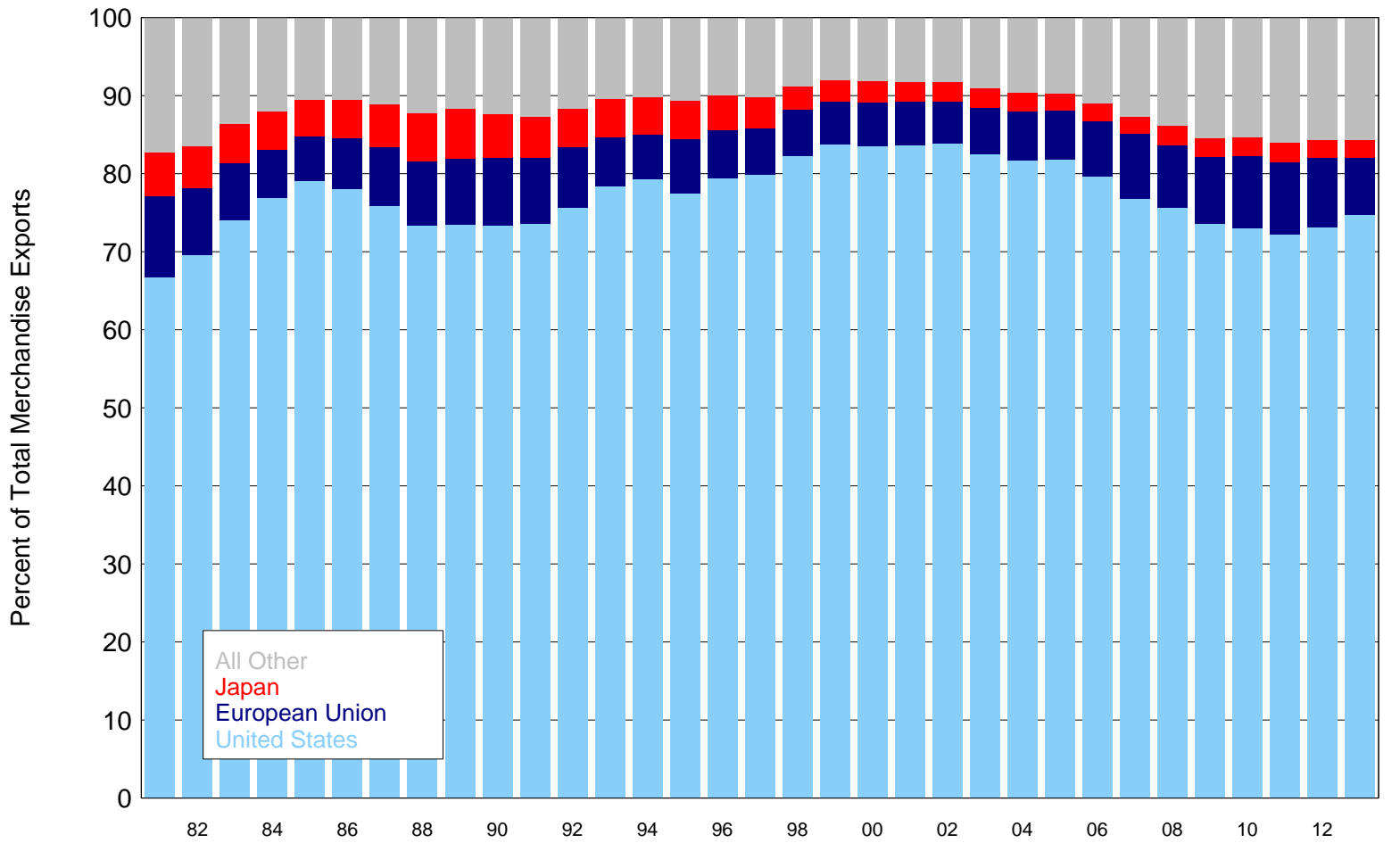
# Canadian Capital Flow Balances (Inflows-Outflows)



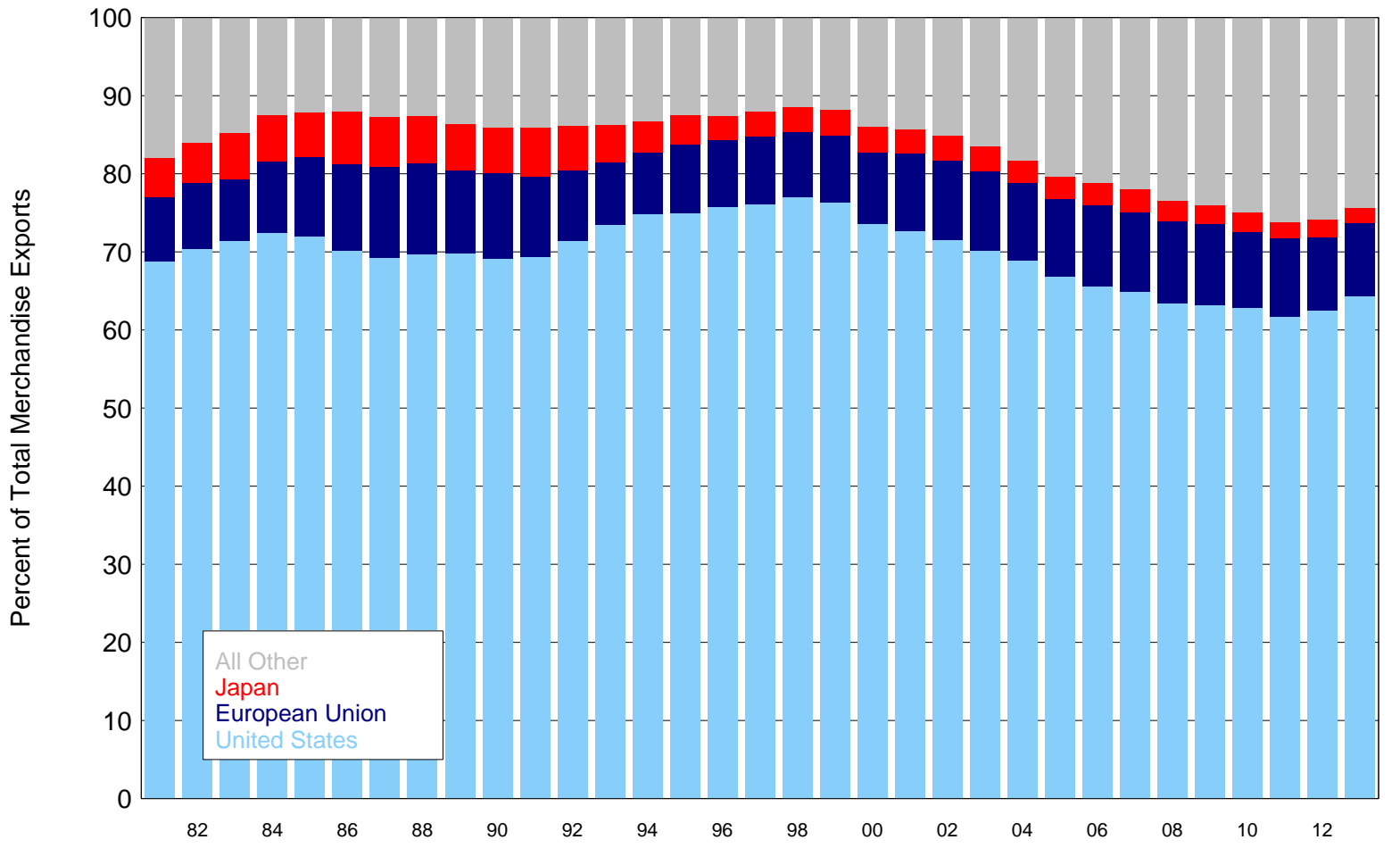
# Canadian Current Account Surplus



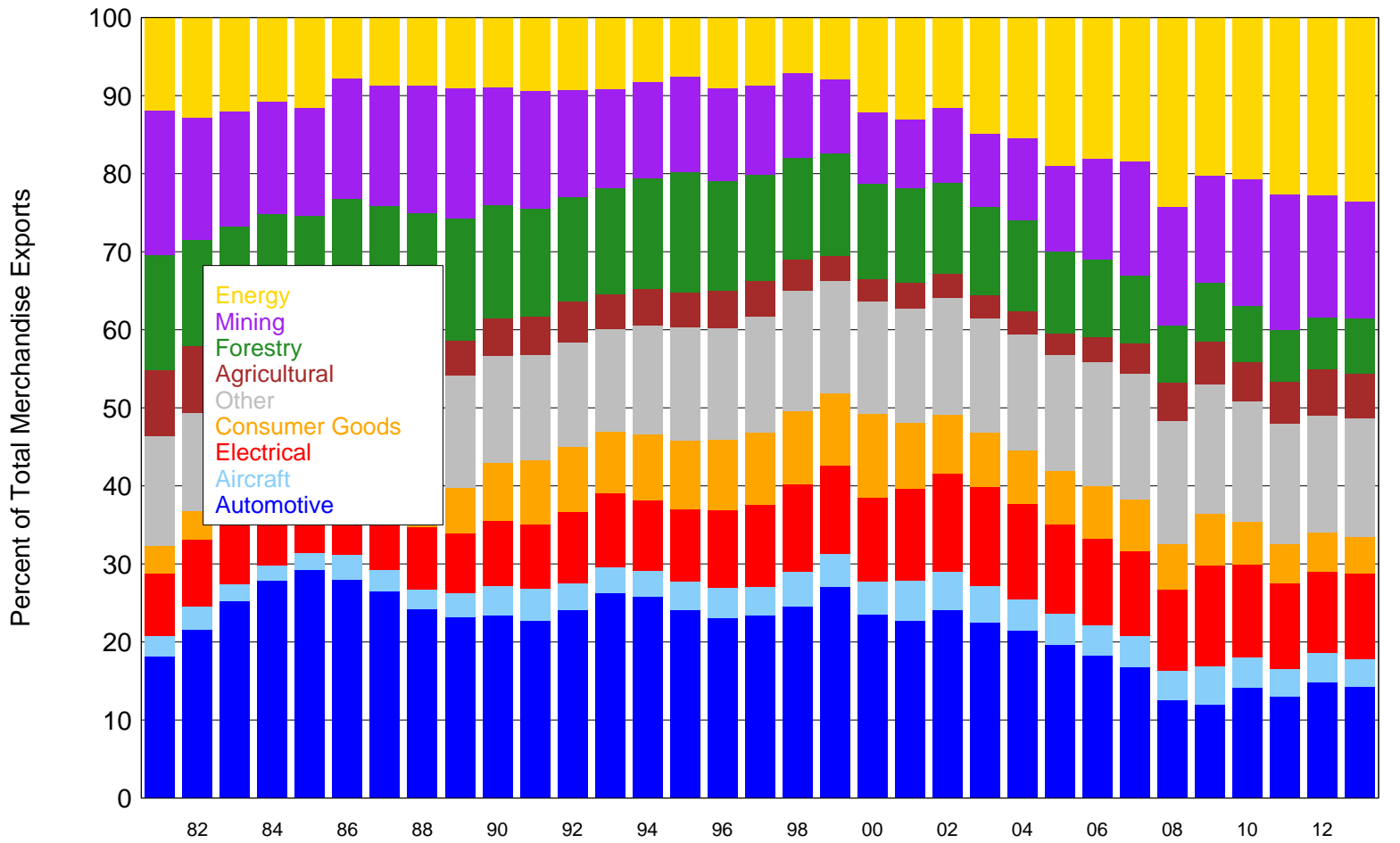
# Destination of Canadian Merchandise Exports



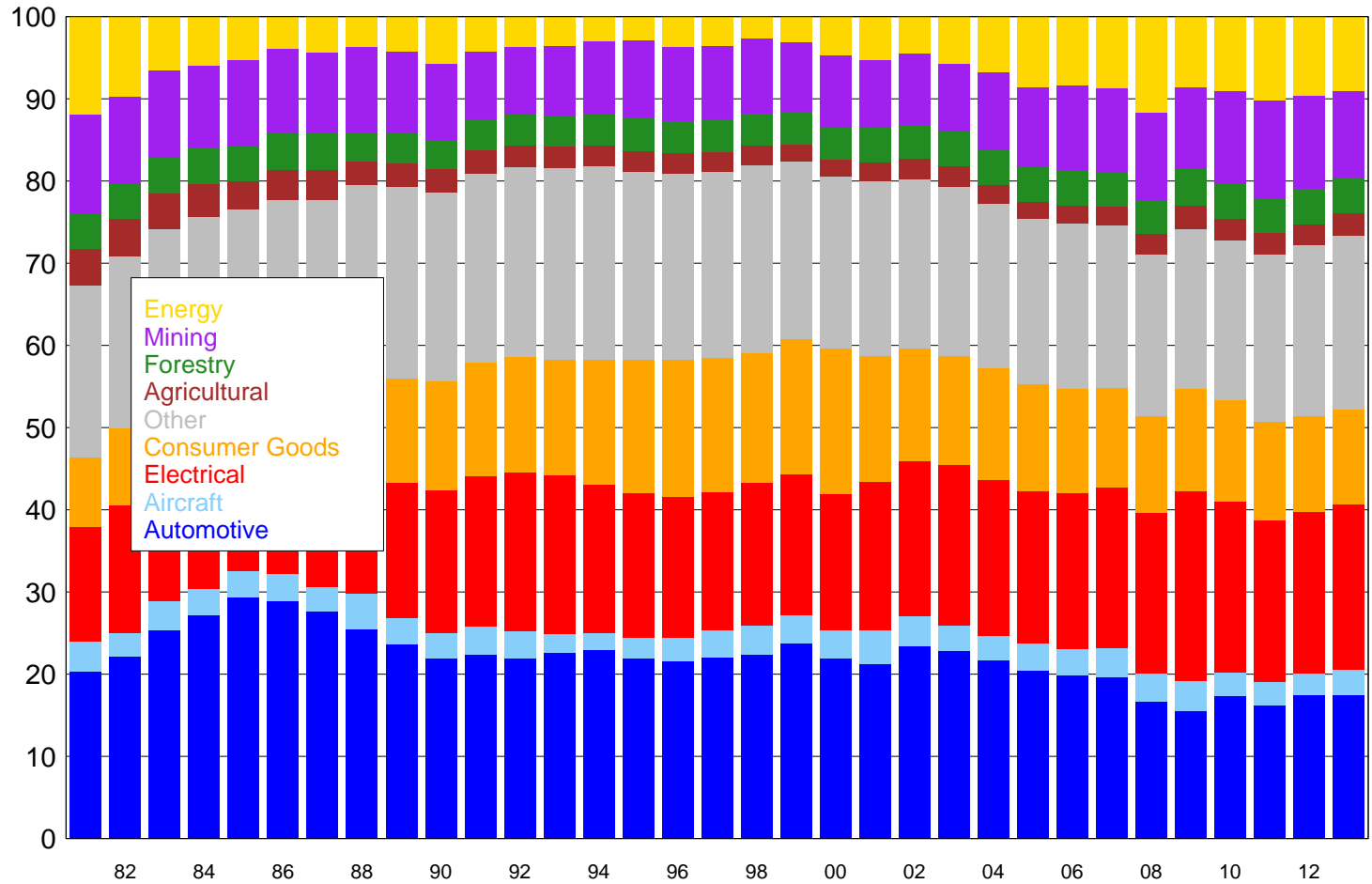
# Origin of Canadian Merchandise Imports



# Composition of Canadian Merchandise Exports

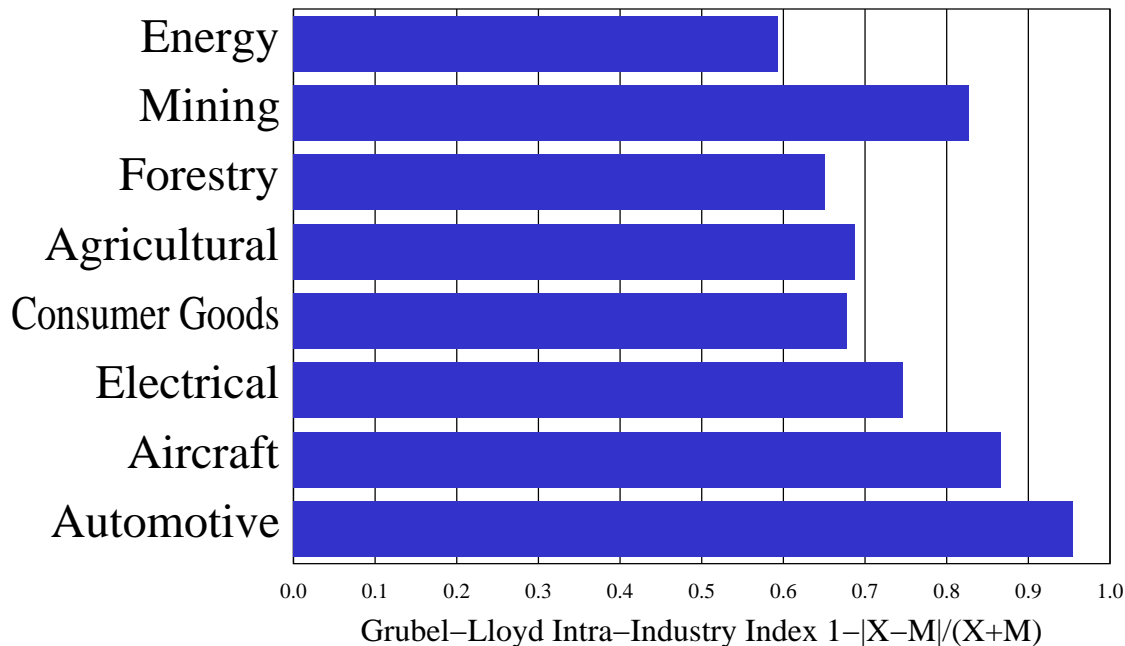


# Composition of Canadian Merchandise Imports





# Canadian Intra-Industry Trade 2004–2013



# Merchandise Export Surplus 2004–2013

